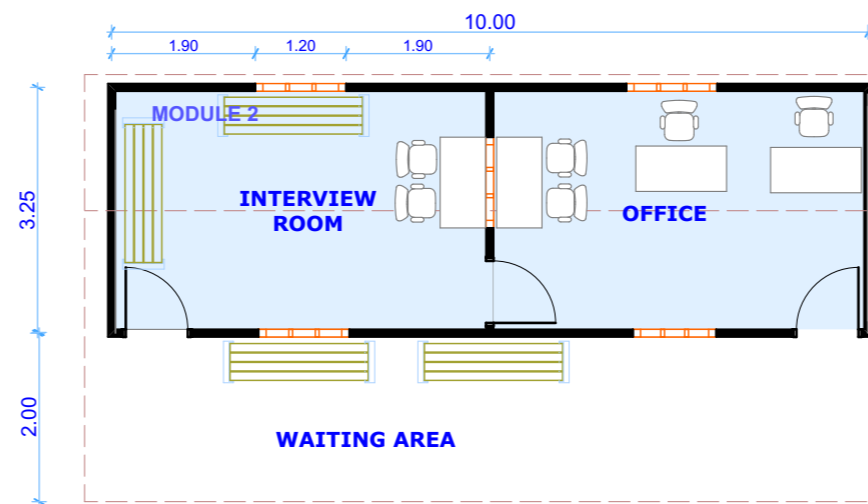


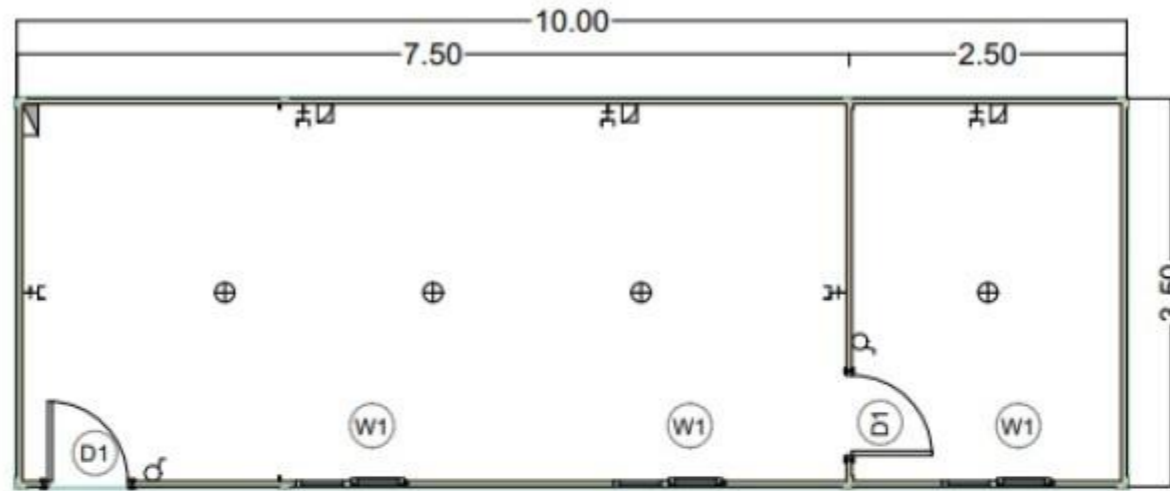
### 10X3.25 METERS PREFAB PLAN (MODULE 1)

RESETTLEMENT PREFABRICATED OFFICE CONTAINERS - KHARTOUM / WHITE NILE / KASSALA STATES			REV.01
UNHCR SUDAN	KHARTOUM, SUDAN COUNTRY OFFICE	FEEDBACK: BAKERM@UNHCR.ORG	DATE: SEP 2022

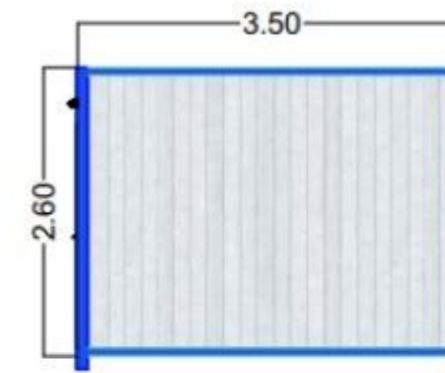


### 10X3.25 METERS PREFAB PLAN (MODULE 2)

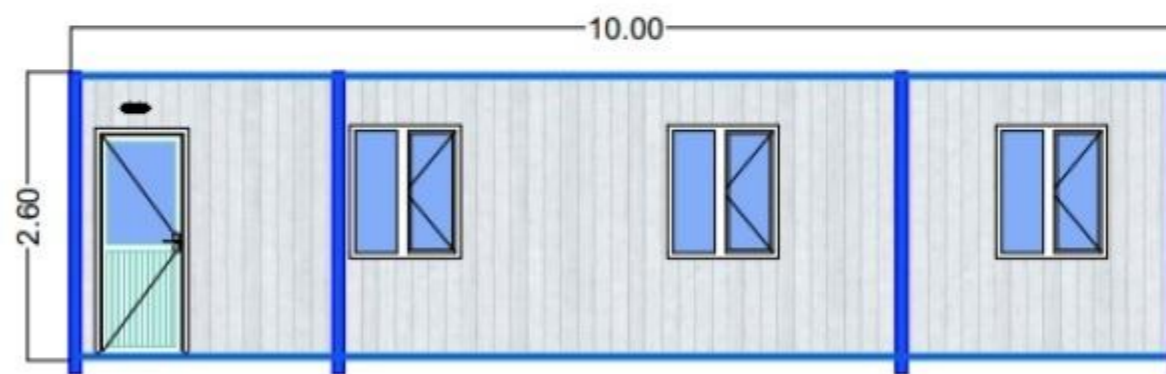
RESETTLEMENT PREFABRICATED OFFICE CONTAINERS - KHARTOUM / WHITE NILE / KASSALA STATES			REV.01
UNHCR SUDAN	KHARTOUM, SUDAN COUNTRY OFFICE	FEEDBACK: BAKERM@UNHCR.ORG	DATE: SEP 2022



**FLOOR PLAN**



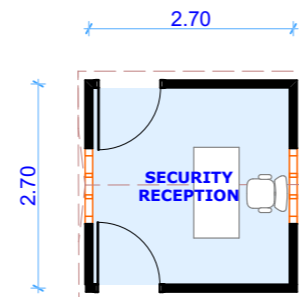
**RIGHT ELEVATION**



**MAIN ELEVATION**

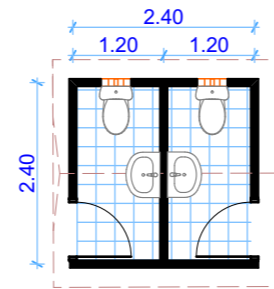
D1	80 X 200
W1	100 X 120
⊕	LAMP
⚡	SOCKET
♂	LIGHT SWITCH
◻	A/C SWITCH
◻	Distribution panel

### 10X3.50 METERS PREFAB PLAN (MODULE 3)



## 2.70X2.70 METERS PREFAB PLAN

RESETTLEMENT PREFABRICATED OFFICE CONTAINERS - KHARTOUM / WHITE NILE / KASSALA STATES			REV.01
UNHCR SUDAN	KHARTOUM, SUDAN COUNTRY OFFICE	FEEDBACK: BAKERM@UNHCR.ORG	DATE: SEP 2022

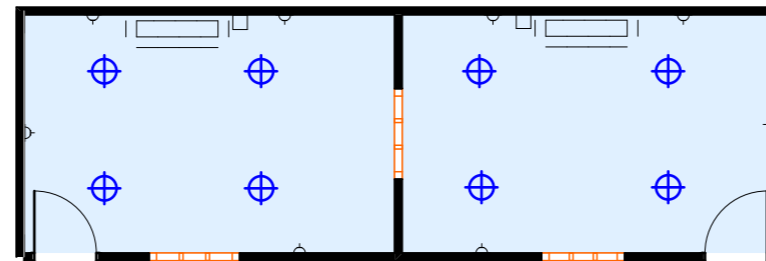


## 2.40X2.40 METERS PREFAB PLAN

RESETTLEMENT PREFABRICATED OFFICE CONTAINERS - KHARTOUM / WHITE NILE / KASSALA STATES			REV.01
UNHCR SUDAN	KHARTOUM, SUDAN COUNTRY OFFICE	FEEDBACK: BAKERM@UNHCR.ORG	DATE: SEP 2022

## RESETTLEMENT PREFABRICATED OFFICE CONTAINERS


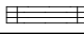
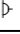

SYMBOL	DESCRIPTION
⊕	CEILING LED LAMP
▢	AIR CONDITION
⤵	13 AMP SOCKET
□	AC SOCKET

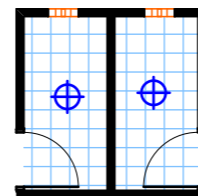
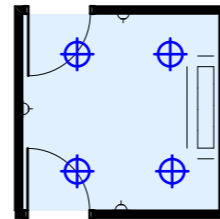


### CONTAINER ELECTRICAL PLAN

RESETTLEMENT PREFABRICATED OFFICE CONTAINERS - KHARTOUM / WHITE NILE / KASSALA STATES			REV.01
UNHCR SUDAN	KHARTOUM, SUDAN COUNTRY OFFICE	FEEDBACK: BAKERM@UNHCR.ORG	DATE: SEP 2022

## RESETTLEMENT PREFABRICATED OFFICE CONTAINERS

SYMBOL	DESCRIPTION
	CEILING LED LAMP
	AIR CONDITION
	13 AMP SOCKET
	AC SOCKET



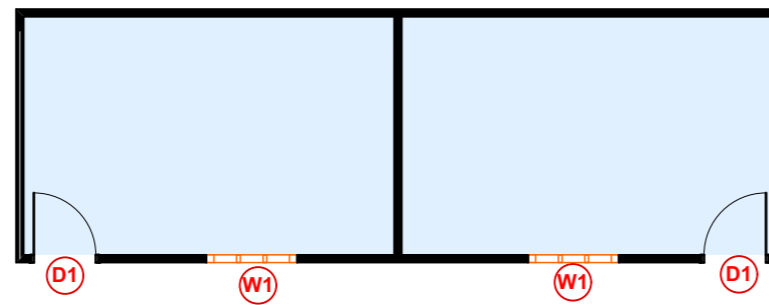
### CONTAINER ELECTRICAL PLAN

RESETTLEMENT PREFABRICATED OFFICE CONTAINERS - KHARTOUM / WHITE NILE / KASSALA STATES			REV.01
UNHCR SUDAN	KHARTOUM, SUDAN COUNTRY OFFICE	FEEDBACK: BAKERM@UNHCR.ORG	DATE: SEP 2022

## RESETTLEMENT PREFABRICATED OFFICE CONTAINERS

### DOORS & WINDOWS

TYPE	W	H	REMARKS
D1	1.00	2.00	INCLUDE FRAME
W1	1.30	1.00	INCLUDE FRAME



### DOORS AND WINDOWS

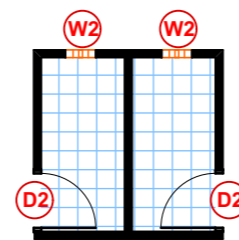
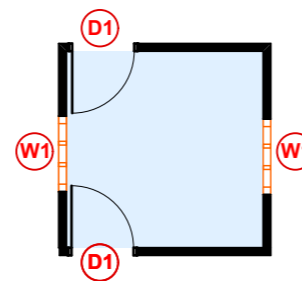
RESETTLEMENT PREFABRICATED OFFICE CONTAINERS - KHARTOUM / WHITE NILE / KASSALA STATES			REV.01
UNHCR SUDAN	KHARTOUM, SUDAN COUNTRY OFFICE	FEEDBACK: BAKERM@UNHCR.ORG	DATE: SEP 2022



## RESETTLEMENT PREFABRICATED OFFICE CONTAINERS

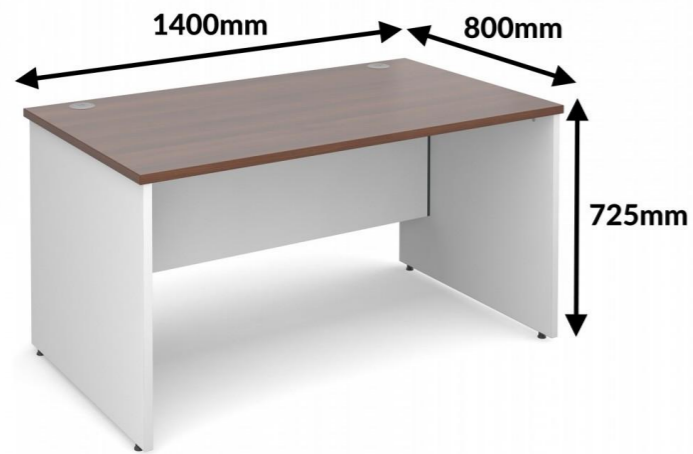
### DOORS & WINDOWS

TYPE	W	H	REMARKS
D1	1.00	2.00	INCLUDE FRAME
D2	0.90	2.00	INCLUDE FRAME
W1	1.00	2.00	INCLUDE FRAME
W2	0.50	0.50	INCLUDE FRAME



### DOORS AND WINDOWS

RESETTLEMENT PREFABRICATED OFFICE CONTAINERS - KHARTOUM / WHITE NILE / KASSALA STATES			REV.01
UNHCR SUDAN	KHARTOUM, SUDAN COUNTRY OFFICE	FEEDBACK: BAKERM@UNHCR.ORG	DATE: SEP 2022



**OFFICE DESK**



**OFFICE CHAIR**



**WAITING BENCH**

### FURNISH DETAILS

RESETTLEMENT PREFABRICATED OFFICE CONTAINERS - KHARTOUM / WHITE NILE / KASSALA STATES			REV.01
UNHCR SUDAN	KHARTOUM, SUDAN COUNTRY OFFICE	FEEDBACK: BAKERM@UNHCR.ORG	DATE: SEP 2022