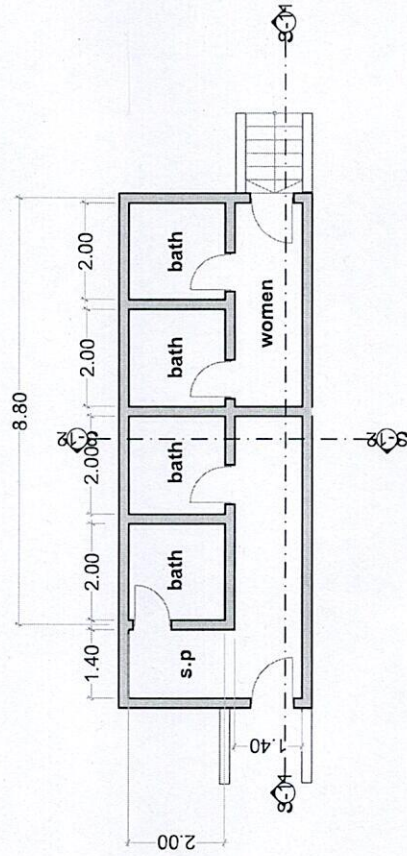
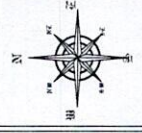
	<p><b>NOTES:</b></p> <p>1- STEEL FY NOT LESS THAN 460N/MM<sup>2</sup>.</p> <p>2- MAX AGGREGATE SIZE SHALL BE 3/4 OF MINIMUM CLEARANCE.</p> <p>3- MAX AGGREGATE SIZE 20MM FOR BEAMS, 25MM FOR SLABS.</p> <p>4- CONCRETE COVER FOR REINFORCEMENT SHOULD NOT BE LESS THAN 25 MM FOR BEAMS, 30MM FOR SLABS.</p> <p>5- MAX AGGREGATE SIZE SHALL BE 3/4 OF MINIMUM CLEARANCE.</p> <p>6- CONSTRUCTION JOINTS SHOULD NOT BE LESS THAN 45 TIMES LARGER BAR SIZE &amp; SHOULD ALWAYS BE LOCATED WITHIN CONCRETE BEAMS.</p> <p>7- BEARING CAPACITY = 160KN/M<sup>2</sup></p> <p>8- ALL STEEL SECTIONS GRADE S 275</p> <p>PT 22/25/2012</p>	<p><b>BLOCK NUM:</b></p>	<p><b>DESIGN &amp; DRAW BY:</b></p>	<p><b>SHEET NO:</b></p>
		<p><b>PLACE NUM:</b></p>	<p><b>SHEET TITLE:</b></p>	<p><b>SCALE:</b></p>
<p><b>NEIGHBOURHOOD:</b></p>	<p><b>CLIENT:</b></p>	<p><b>SCALE:</b></p>	<p><b>SCALE:</b></p>	
<p><b>AREA:</b></p>	<p><b>CLIENT:</b></p>	<p><b>SCALE:</b></p>	<p><b>SCALE:</b></p>	
<p><b>CITY:</b></p>	<p><b>CLIENT:</b></p>	<p><b>SCALE:</b></p>	<p><b>SCALE:</b></p>	
	<p>view</p>	<p>1:100</p>		



- NOTES:
- 1- STEEL FY NOT LESS THAN 460N/MM<sup>2</sup>
  - 2- ALL STEEL SECTIONS SHALL BE GRADE 3235
  - 3- MAX AGGREGATE SIZE 20MM FOR BEAMS, COLS AND 30MM FOR FOUND
  - 4- CONCRETE COVER FOR REINFORCEMENT SHOULD NOT BE LESS THAN 25 MM FOR BEAMS & COLUMNS
  - 5- ALL CONSTRUCTION JOINTS SHALL BE LOCATED AT ONE FIFTH OF SPAN OF SLABS
  - 6- BEARING CAPACITY = 160KN/M<sup>2</sup>
  - 7- ALL STEEL SECTIONS GRADE 3235
  - 8- BY 22/25/2012



BLOCK NUM:  
 PLACE NUM:  
 NEIBOURHOOD:  
 AREA:  
 CITY:

DESIGN & DRAW BY:  
 CLIENT:

SHEET TITLE:  
 ground floor plan

SHEET NO:  
 SCALE:  
 1:100